

# PLYCO

CORPORATION

PO BOX 386 • ELKHART LAKE, WI 53020

## SERIES 98SS STAINLESS STEEL DOORS

**SERIES 98SS**  
STAINLESS STEEL DOORS

Series 98SS is a pre-hung 100% stainless steel door panel and jamb ready for installation. The SERIES 98 has a proven performance record in high traffic areas.



- Low Maintenance
- Easy Installation
- Full Weather Stripping
- 18 ga. 304 stainless steel



**Build PLYCO Strong**



# 98SS

## Stainless Steel Door

Series 98SS is a pre-hung 100% stainless steel door panel and jamb ready for installation.



- For interior and exterior use that is affordable and long lasting
- Great for any corrosive environment
- Single or doubled doors available
- Flush door with edge seam
- Door panel constructed of 18 ga 304 stainless steel with vertical grain
- Insulated with polystyrene core
- Frame is 16 ga 304 stainless steel

## Windows:

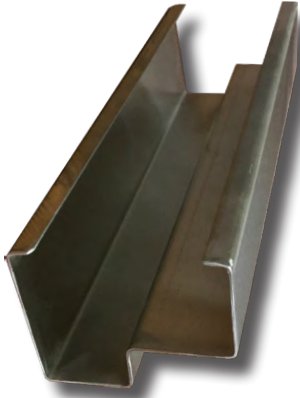
- Pre-Installed with stainless steel frame
- Sizes Available: 10x10, 16x16, 20x24, & 22x36

## Door Options:

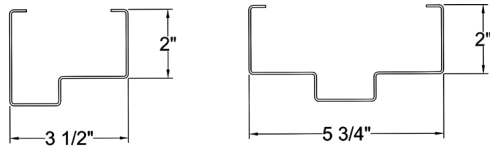
- Heavy Duty Closer
- Stainless Steel Lever Latch
- Keyed Lever/Lever Lockset
- Passage Lever/Lever
- Stainless Steel Deadbolt
- Panic Bar
- Stainless Steel Push Plate

# Series 98SS Frame Options

## Channel Frame



- Up to 6" standard jamb depth
- 2" or 4" header
- Reinforced recessed holes in each jamb for anchoring
- Four sided frame (includes threshold)

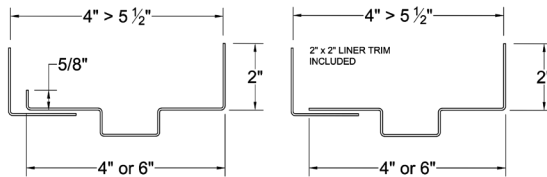


STANDARD CHANNEL JAMB SECTIONS

## Flange Frame



- 4 1/2" or 6 1/2" standard jamb depth
- Four sided Frame (includes threshold)



HEADER SECTION

JAMB SECTION

## All Frames Include

- Type 304 Stainless (16 gauge)
- Finish #4 Satin - Vertical Grain
- Mitered and Welded Faces
- Prepared for strike with reinforcement tab
- 4 1/2" x 4 1/2" stainless steel hinge - standard
- Full perimeter bulb seal to provide excellent seal
- Hinge reinforcements





# PLYCO Series 98SS Door

## SIZES

Stock sizes are 3/0 x 6/8. See price pages for other sizes available

## HINGES

Channel Style: Double Doors: Astragal attached to inactive panel. Surface mounted head and foot bolts included. Right side active panel is standard, may request left side active

## THRESHOLD

(4) 4-1/2" x 4 1/2" stainless steel ball bearing (fixed pin) hinges are standard.

Stainless steel ADA threshold is standard, welded to frame.

## DOOR PANEL

### THICKNESS

1 3/4"

### SKIN

TYPE 4 SURFACE STAINLESS VERTICAL GRAIN. Welded stainless steel 18 ga. panel.

### BLOCKING

Closer blocking is standard. Special blocking may be ordered as an option.

### INSULATION

Panel core is Dow Styrofoam. R = 13

### COLORS

Stainless Steel

### LOCK FACE PREP

Standard blocking for Commercial Lockset. Deadbolt is special order.

### LITE KITS

Thermal pane tempered glass lite is normally used.  
Lites in stock are: Stainless steel frame 20 x 24 no grids.  
Additional lite kits available include 10x10, 16x16 and 22x36

### Bottom Seal

Aluminum holder with vinyl sweep (for use with thresholds)

## JAMB

### TYPE

PREHUNG

### MATERIAL

16 ga. TYPE 4 SURFACE STAINLESS VERTICAL GRAIN

### FEATURES

Fully Welded all four corners

### FRAME DEPTHS

Flange Style: 4" or 6"

Channel Style: 3 1/2" or 5 3/4"

### Trim Kit

Flange Style: 2" x 2" (4" > 5 1/2" walls or 6" > 7 1/2" walls) trim kit to wrap opening inside or out side.



**800-967-2130**  
[www.epsbuildings.com](http://www.epsbuildings.com)  
Locations in:  
**Iowa-New York - Missouri**

